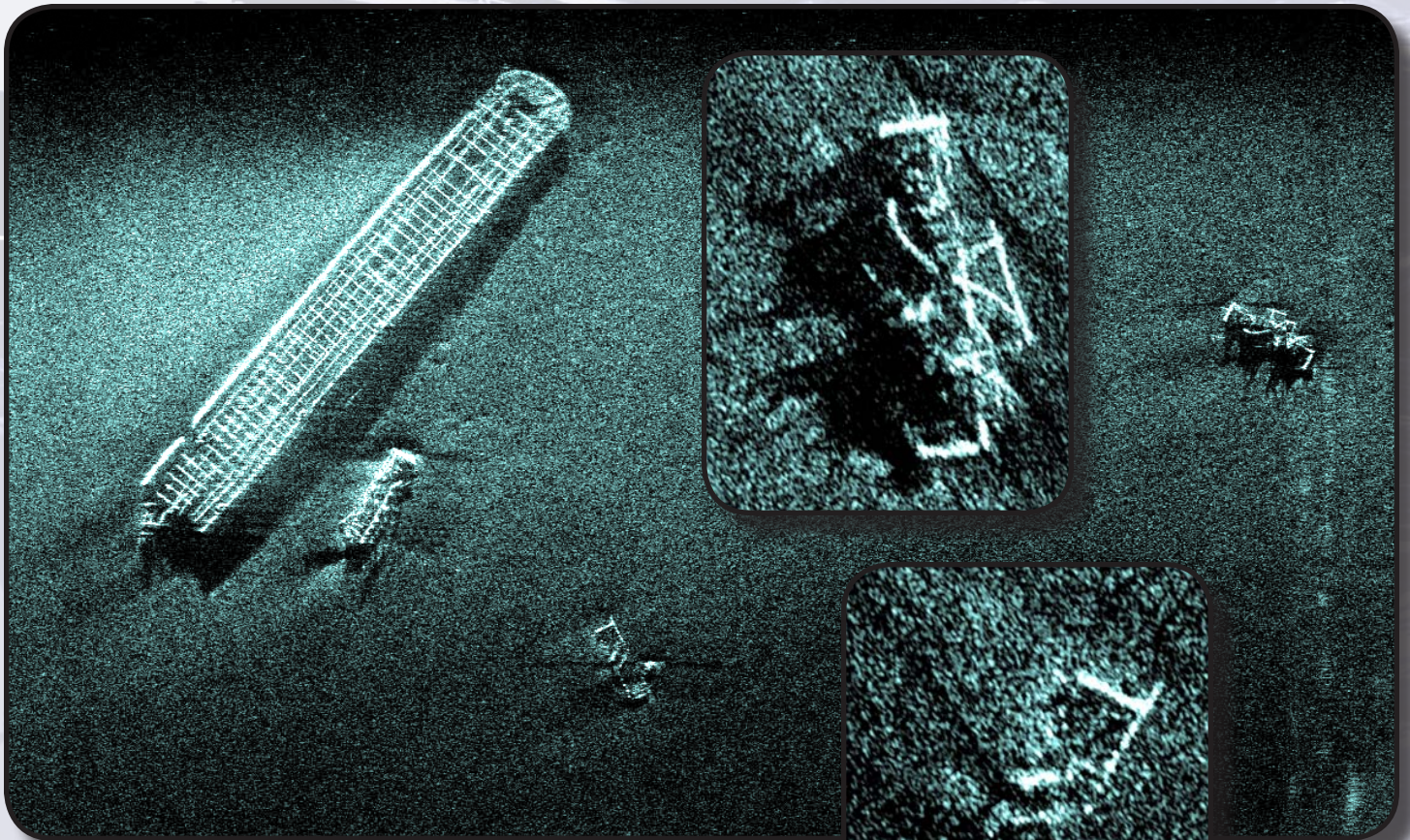


# PROSAS™ 60 SYNTHETIC APERTURE SONAR SHIPWRECK IMAGERY

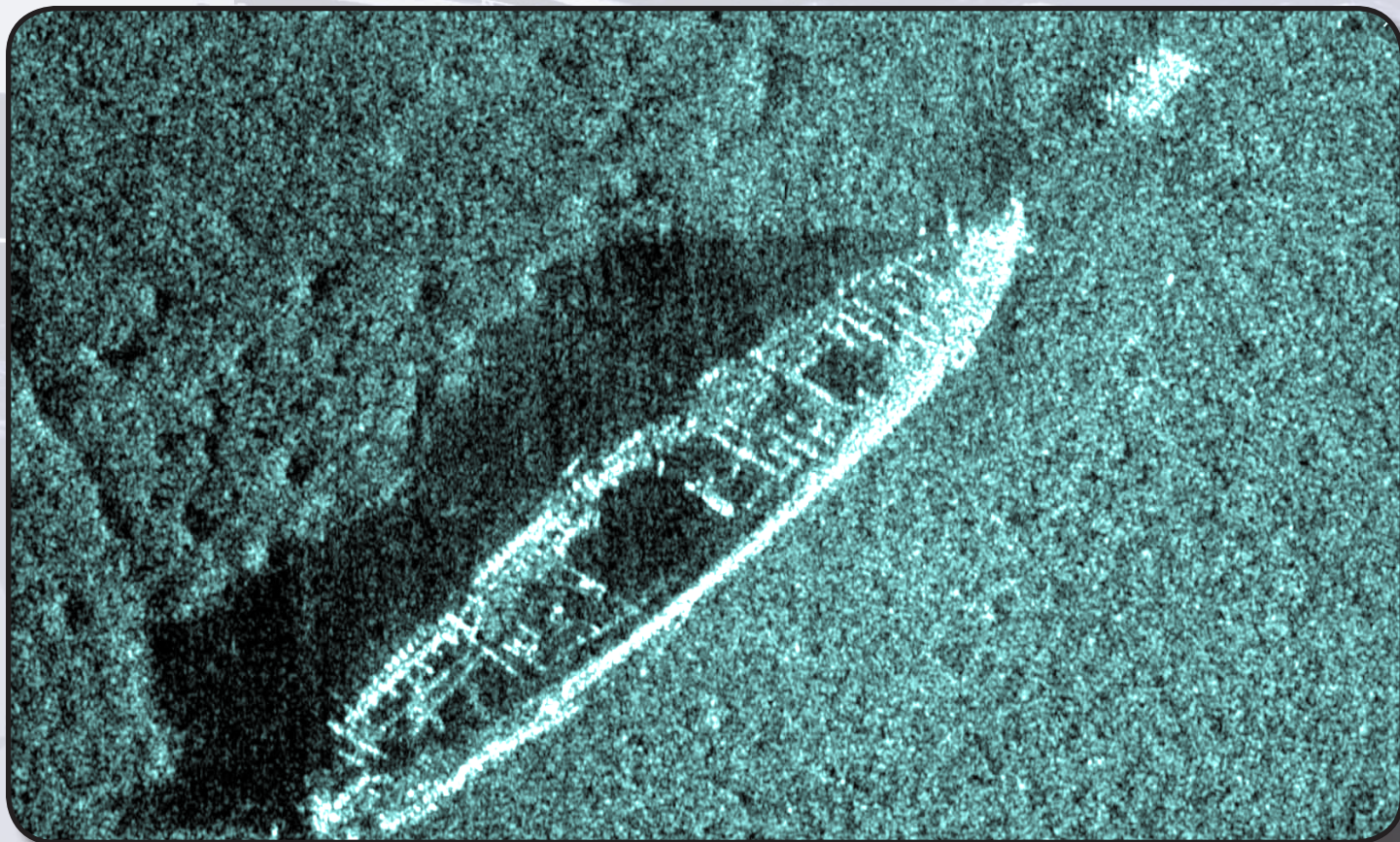


Courtesy PSMHS

## MT No.6 (TACOMA):

A BARGE THAT TRANSPORTED  
RAILROAD CARS, SUNK ON  
NEW YEAR'S EVE 1949  
AFTER A COLLISION.

# PROSAS™ 60 SYNTHETIC APERTURE SONAR SHIPWRECK IMAGERY



**ASTORIAN (NISQUALLY):**  
STEAM PROPELLER BUILT IN  
1911 TO SERVE THE TACOMA  
TO OLYMPIA ROUTE.

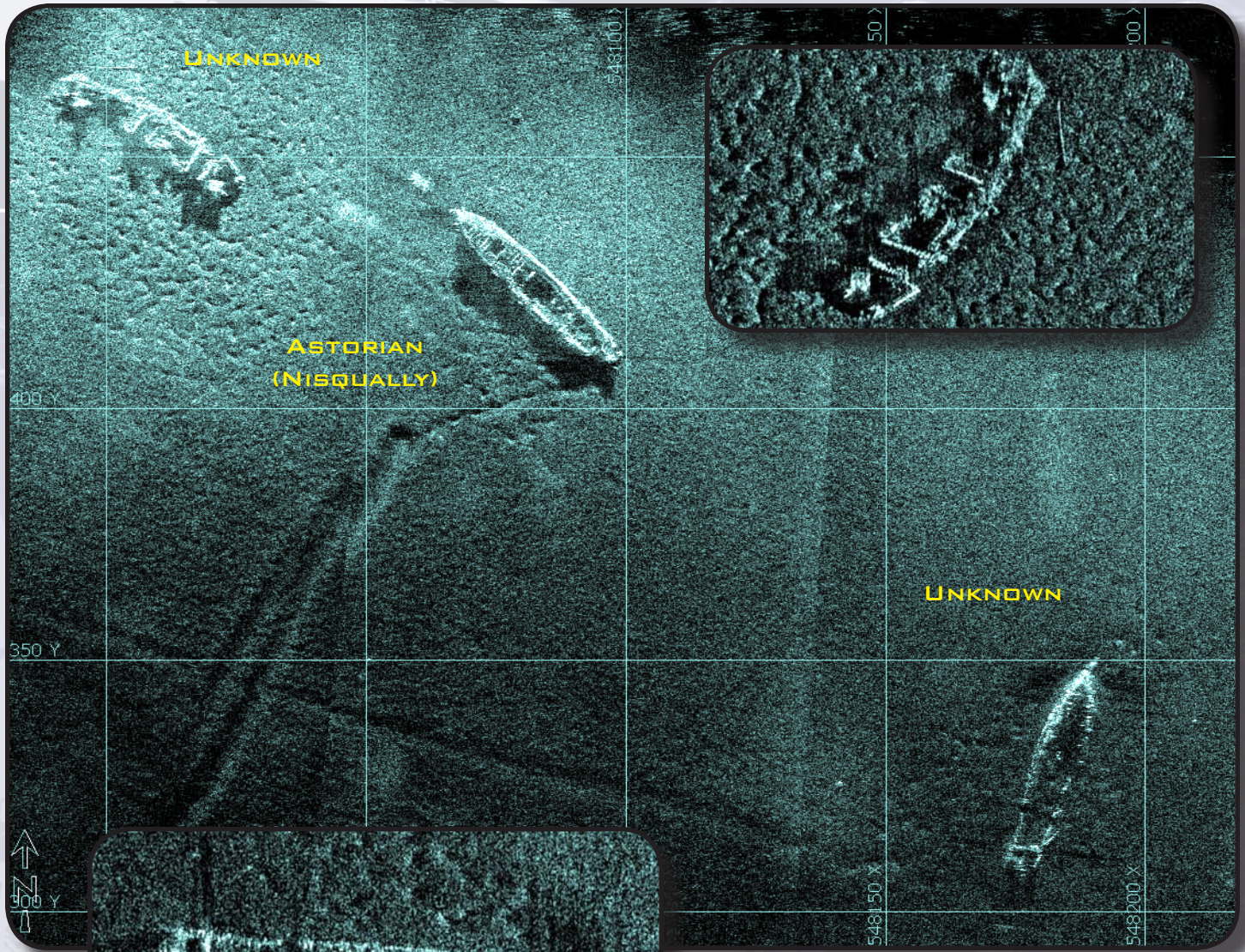
**WILLIAMSON**  
& ASSOCIATES  
**Raytheon**  
Applied Signal Technology



SL HYDROSPHERIC  
WHITEFISH, MT  
U.S.A.

SLHYDROSPHERIC.COM

# PROSAS™ 60 SYNTHETIC APERTURE SONAR SHIPWRECK IMAGERY



## THREE SHIPWRECKS:

TOP LEFT: UNKNOWN

TOP MIDDLE: ASTORIAN

BOTTOM RIGHT: UNKNOWN



**Raytheon**  
Applied Signal Technology



SL HYDROSPHERIC  
WHITEFISH, MT  
U.S.A.

SLHYDROSPHERIC.COM